



Barkers Hill, Semley, Shaftesbury, Dorset, SP7 9BJ

- A beautifully designed and spacious Tiny House
- Fitted out to a very high specification
- Integrated kitchen with various appliances
- Double bedroom with attractive Gothic style windows
- Mezzanine floor that can be used as a reading area or for storage
- Spacious shower room with a walk in double shower
- Comfortable seating/dining area
- Internet ready
- Easy to transport
- Currently located in Dorset and is available now for purchase

Guide Price £75,000

Located in Semley (Dorset)

R M English are proud to present the NaviHo Apex, a beautifully designed house set upon a mobile base, known as a “Tiny House on Wheels.” The Tiny House movement originated in North America where it spread from coast to coast and spilled over both the Atlantic and Pacific, leading to a surge in popularity in Europe and Australasia. Tiny Houses are part of an architectural and social movement that advocates living simply in small homes.

The NaviHo Apex boasts an abundance of internal space and has been fitted out to an extremely high specification, promoting a more economical way of living without sacrificing modern comforts. The NaviHo also has significant appeal as guest accommodation, a holiday home, and as a home office. The current owners (who designed and built the NaviHo) have been successfully letting the Apex as an Airbnb over the last few months and are now building more NaviHo models to rent out and sell. Full details regarding running a NaviHo as a buy-to-let or Airbnb can be obtained from the agent on request.

Aside from a continuous ground floor, the NaviHo Apex features two further mezzanine floors; one is a loft style bedroom and the other is currently used as a reading and living space, but could otherwise occupy another bed. The house is open plan with high cathedral ceilings, and a mixture of large traditional and gothic shaped windows that draw in substantial light, giving the building a light and open feel. Bamboo flooring has been obtained from sustainable sources and features throughout. The house is equipped with a spacious shower room, and a kitchen including oven, induction hob, dishwasher and washing machine. There is a comfortable dining and seating area with a flat screen TV. Further communication facilities include a wireless router and internet connection that can be connected to your existing provider. The house connects to mains water and electricity supplies, although it has the ability to be adapted to off-grid living if required.

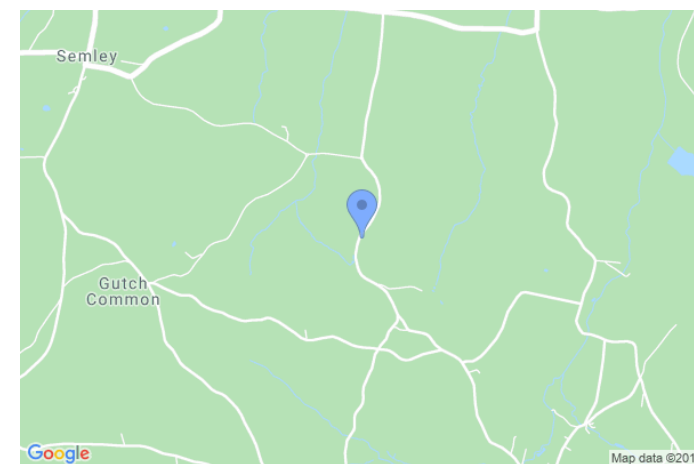
Although only one Apex model has been produced for immediate sale, orders can be made for single or multiple units. Discounts may be offered for multiple orders and a price list can be produced on request.

If you are looking for an economical option then The NaviHo Nest could be the perfect model for you. It is currently in its design phase with a guide price of £55,000, but significant discounts (up to 45%) are available for pre-orders depending on payment and build schedule. Further details about the NaviHo Nest can be obtained from the agent on request.

Location

Viewings of the ready-built NaviHo Apex are available at any time on request through the Agent. The property is currently located in Semley (Dorset).

In a significant number of settings, NaviHo buildings do not require planning permission due to their nature of being set upon wheels, and hence they have the ability to be towed on and off land via a track or road.





A BESPOKE TINY HOUSE FINISHED TO THE HIGHEST OF STANDARDS



R M English Ltd, 18 Castlegate, York, YO1 9RP Tel: 01904 697900



Viewing strictly by appointment

Tenure Freehold

Council Tax Band Not Specified

Local Authority

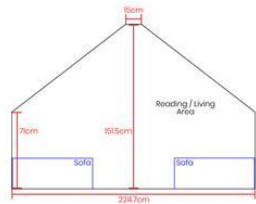
Services Plumbing for mains water, drainage and can connect to 240v
(British standard)



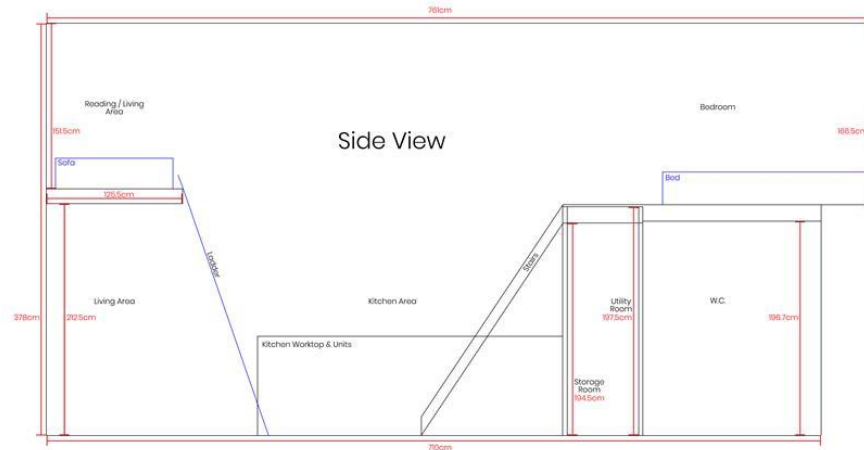
rmenglish.co.uk



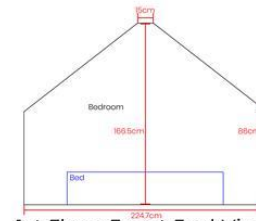
Internal Dimensions



1st Floor Rear End View



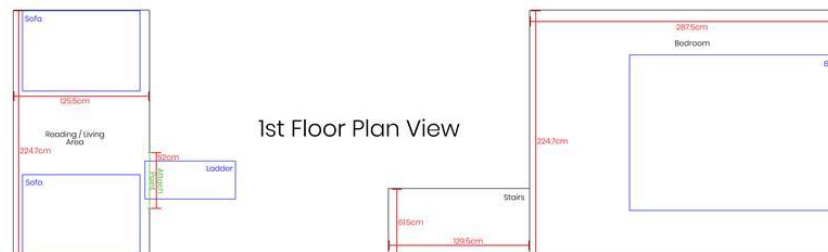
Side View



1st Floor Front End View



Ground Floor Plan View



1st Floor Plan View

Legend

- Fixed Assets
 - Entrance Ways
 - Soft Furnishings / Moveable Assets
 - Measurements
- Drawn To Scale

Disclaimer

R M English, their clients and any joint agents give notice that: 1: They are not authorised to make or give any representations or warranties in relation to the property either here or elsewhere, either on their own behalf or on behalf of their client or otherwise. They assume no responsibility for any statement that may be made in these particulars. These particulars do not form part of any offer or contract and must not be relied upon as statements or representations of fact. 2: Any areas, measurements or distances are approximate. The text, photographs and plans are for guidance only and are not necessarily comprehensive. It should not be assumed that the property has all necessary planning, building regulations or other consents and R M English have not tested any services, equipment or facilities. Purchasers must satisfy themselves by inspection or otherwise.